



About Us...

We believe

not only in serving our valuable clients

But serving them with

Efficiency, Honesty and Dedication.

Company has completed many projects in the past with the joint venture with many reputed builders. In mumbai suburban area like vile parle, santacruz, borivali also in pune.

Company is division of Ami group, A big name in logistics services, clearing forwarding and own their flits for the transportation, ISO 9001 2008 co.

Few are our upcoming project in Ghatkopar & Navi Mumbai with their own brand name Ami housing

Projects:

Project in Progress

Parvati Heritage - Ghatkopar

Current Project

Planet Mercury - Ulwe, Navi Mumbai

Upcoming Project

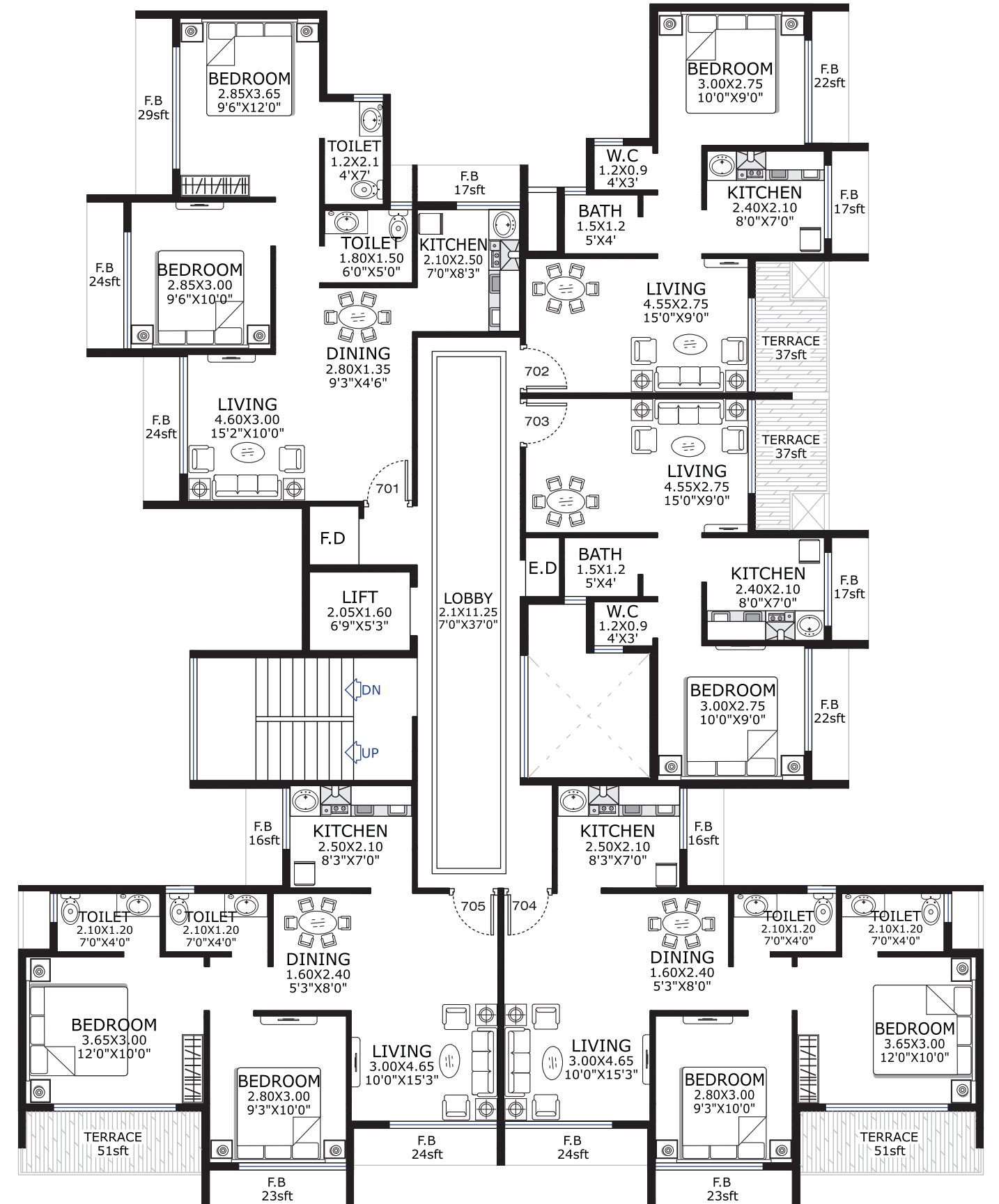
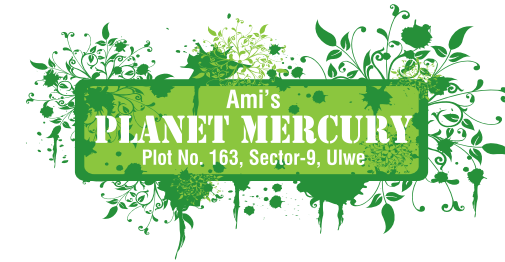
Planet Venus - Kamothe, Navi Mumbai.

Samarath - Ghatkopar(East), Mumbai.

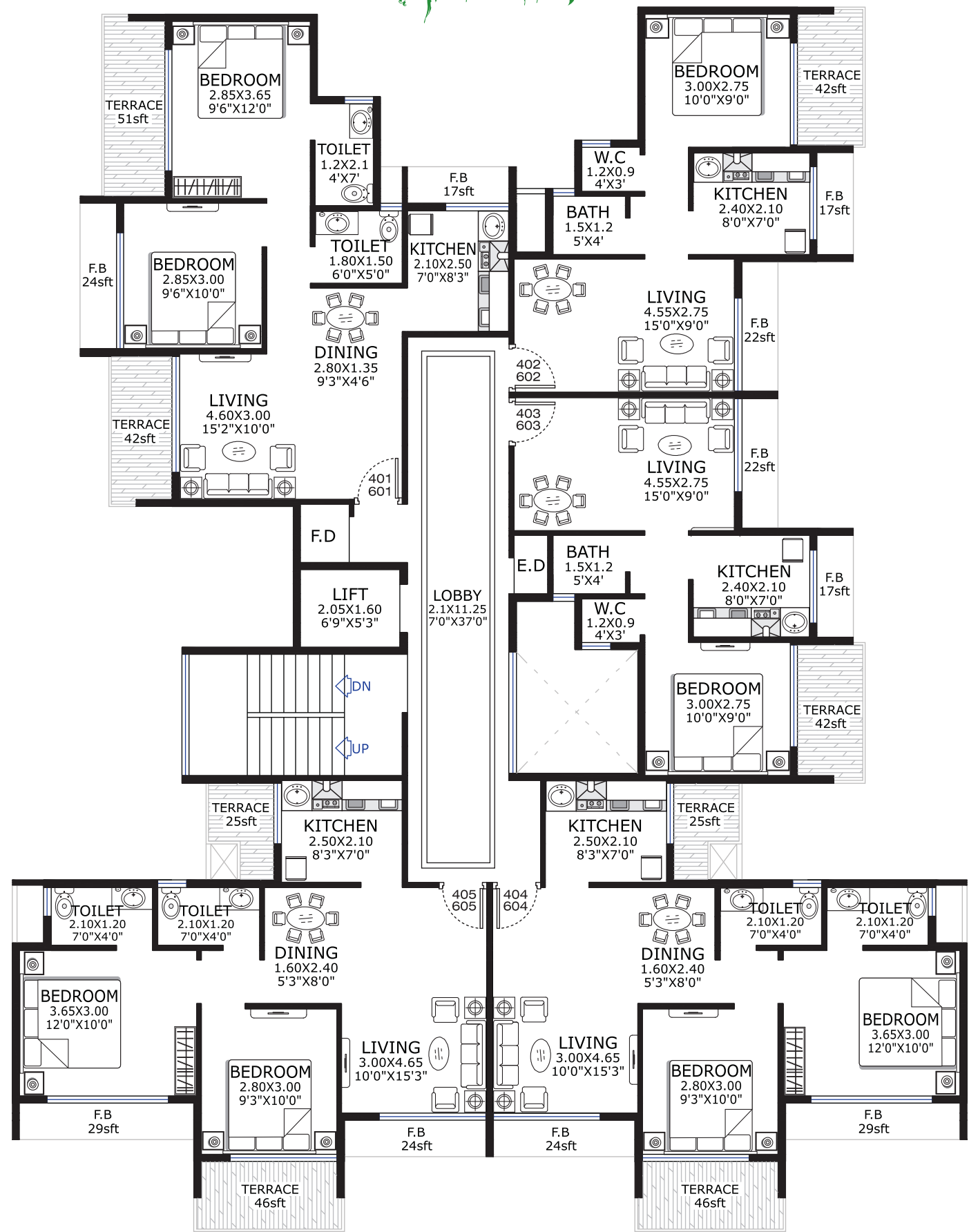
Planet Jupiter - Ghatkopar(West), Mumbai.

Vrindavan Nagar - Mulund (West), Mumbai.

Adenwala - Mulund (West), Mumbai.



Typical 4th & 6th Floor Plan





Luxurious Features :

- Easy access to the Mumbai-Pune Expressway
- Small distance from proposed Ulwe Railway Station
- Small distance from proposed International Airport
- Lush Green Landscaped Garden
- Jogging Track
- Good Natural Environment

About Ulwe

Welcome to 21st century India's newest nodal township Ulwe.

Positioned strategically amidst Navi Mumbai's dynamically evolving cityscape, Ulwe has been designed to serve a population of 3,70,000. It is one of the five nodes along which the polycentric CBD of Navi Mumbai will be spread.

It lies within striking distance to the proposed water transport terminal, the international airport and is soon to be realised very own railway station served by two of Navi Mumbai's commuter rail corridors. "PLANET MERCURY" positioning at the very epicenter of all this activity will not just guarantee you the convenience of accessibility, but also greater appreciation for your property.

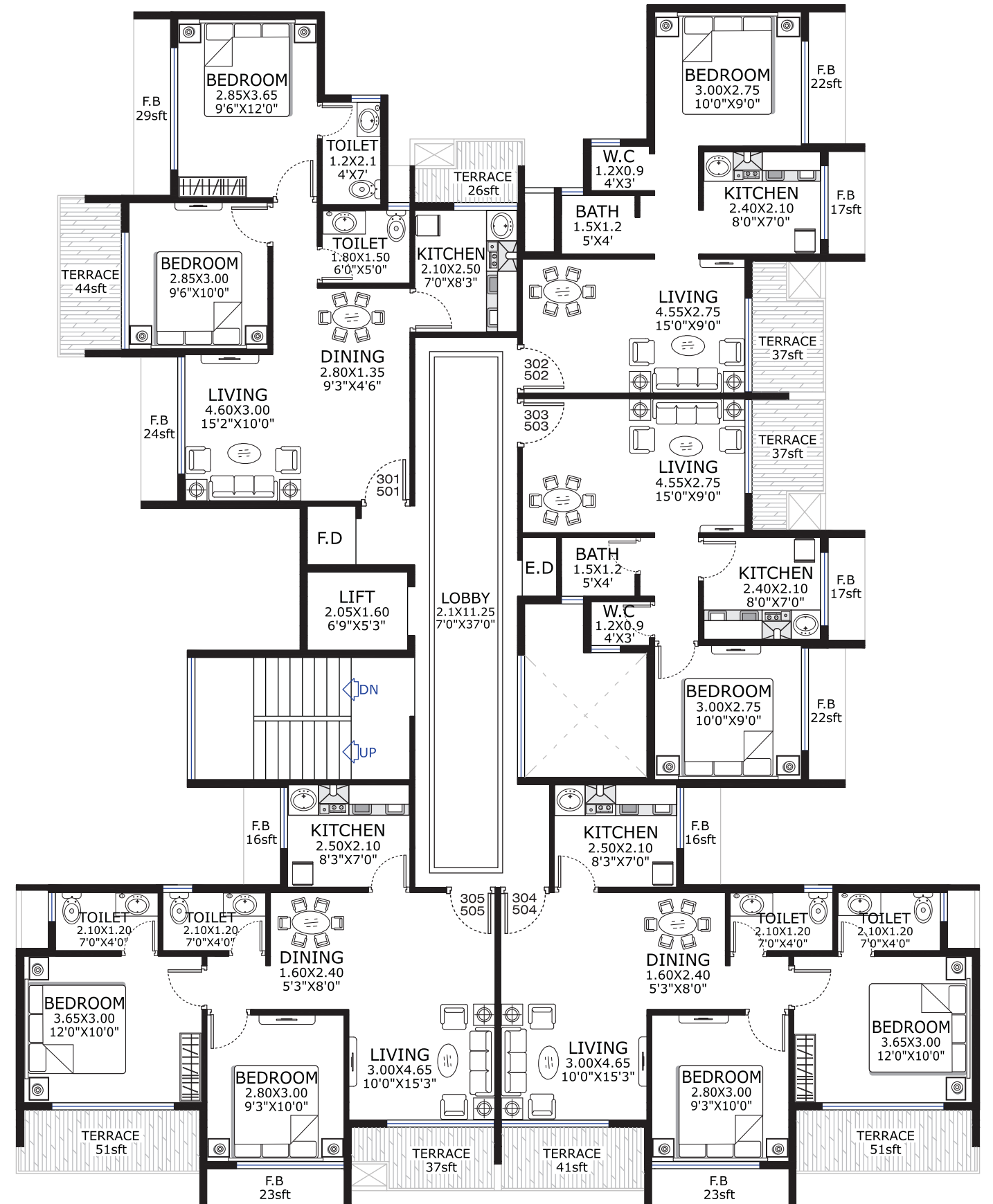
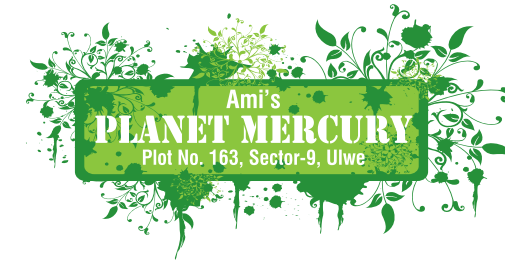
- * Presence of service industries like DRUs, IT, biotech, airport related activities
- * Proximity to Nhava Sheva Docks (JNPT) to south.
- * The proposed rail link between Belapur and Uran also passes through the zone.

Accessibility

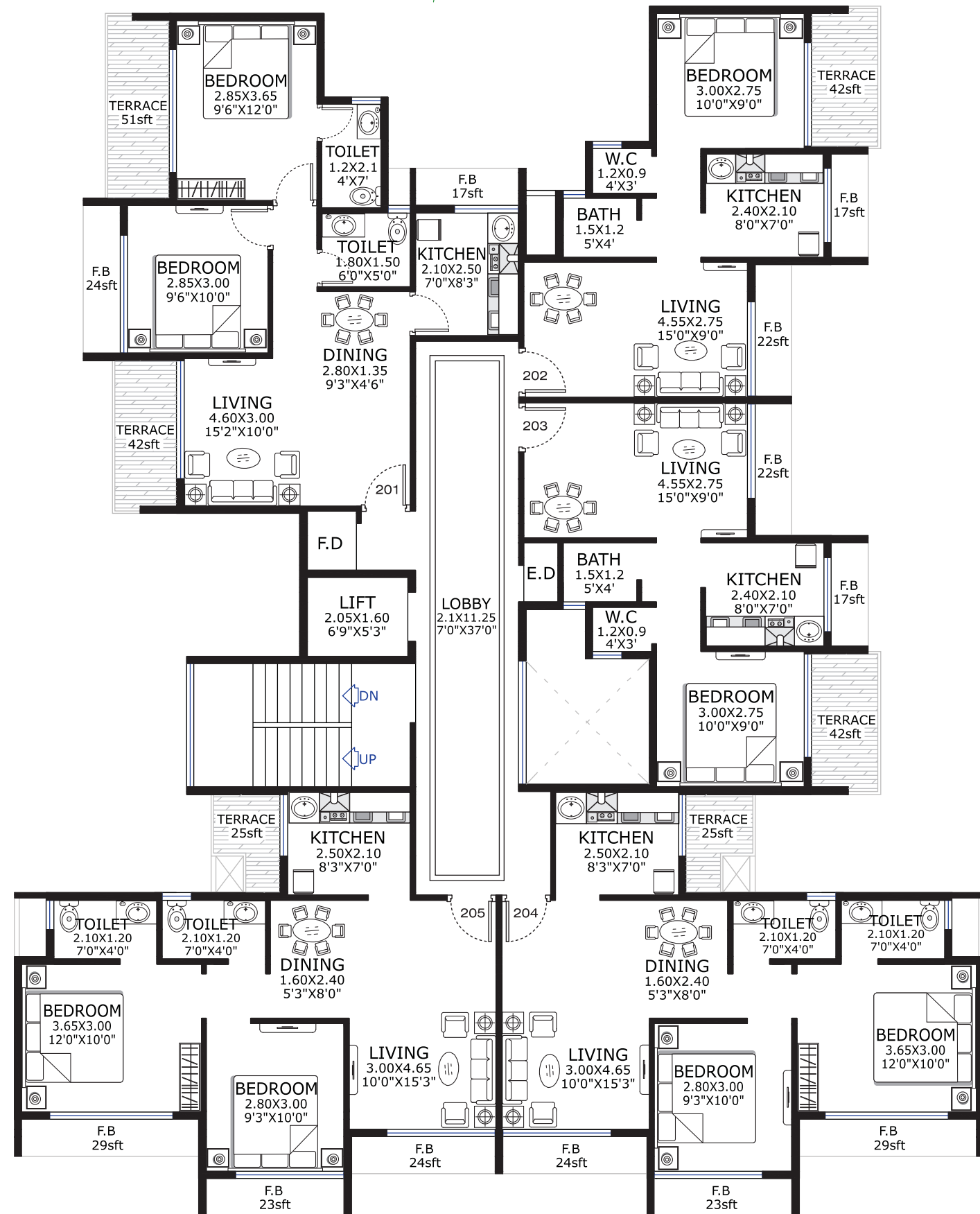
Road Access from Uran, Belapur Express & Mumbai Pune Expressway and NH 4B

5 km from Palm Beach Road of Navi Mumbai.

Railway Walking distance from proposed Bhamandongri Railway Station



Typical 3rd & 5th Floor Plan



Amenities

BUILDING

- Earthquake resistant Seismic Structure • 6" external & 4" Internal wall
- Anti termite treatment • All services designed by renowned consultants
- Lavishly designed entrance lobby

DOOR

- Elegant Laminated door and inner doors • Premium quality brass / chromium plated fixtures and fitting • Granite / Marble frames for toilet

WINDOW

- Powder coated aluminum sliding windows of branded make in 3/4 tracks
- Marble/granite window seal
- Flower bed area covered with s. s. railing and toughened glass

FLOORING

- 2" x 2" vitrified tiles with skirting for entire apartment
- Master bedroom with wooden flooring • 1" x 1" anti skid ceramic tiles for toilets and drying area • Concrete / paved internal pathways

KITCHEN

- Granite platforms with stainless steel sink • Dado tiles upto 2ft. height
- Exhaust fan water purifier unit • Sufficient power points for appliances

DRYING AREA

- Washing area with Glazed / Ceramic tile dado upto 3ft. height
- Water and drain line • Space for drying clothes
- Provision for washing machine • Ceramic tile flooring

BATHROOM

- Marble/granite stone fascia for door opening • Dado tiles upto 7ft. height
- Basin with granite counter for master bedroom
- Haqur or similar make C.P. fitting with hot and cold mixers
- Sanitray fitting of hindware or equivalent make with health fasset
- Concealed plumbing • Provision for exhaust fan water heater

PAINTING

- Internal walls with bound distemper and luster finish
- External wall with semi acrylic paint / rich textured paint where required

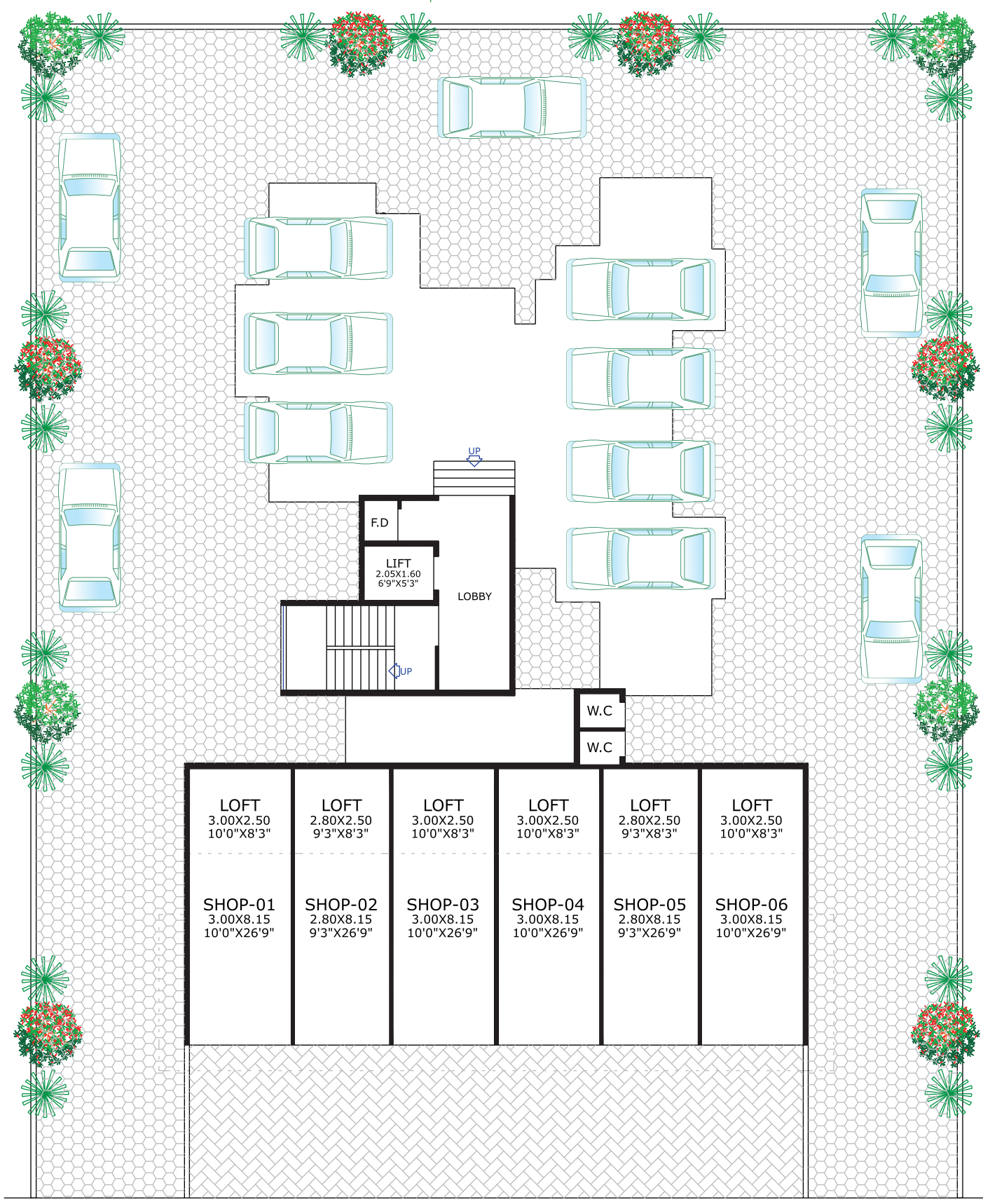
ELECTRIFICATION

- Concealed, fire resistant high quality copper wiring
- Ample light points with legrand or equivalent make modular switches
- Earth leakage circuit breaker



Ami's
PLANET MERCURY
Plot No. 163, Sector-9, Ulwe

Ground Floor Plan



←----- R O A D ----->

Ami's
PLANET MERCURY
Plot No. 163, Sector-9, Ulwe

1st Floor Plan

